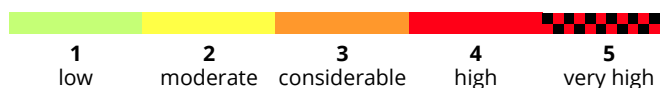
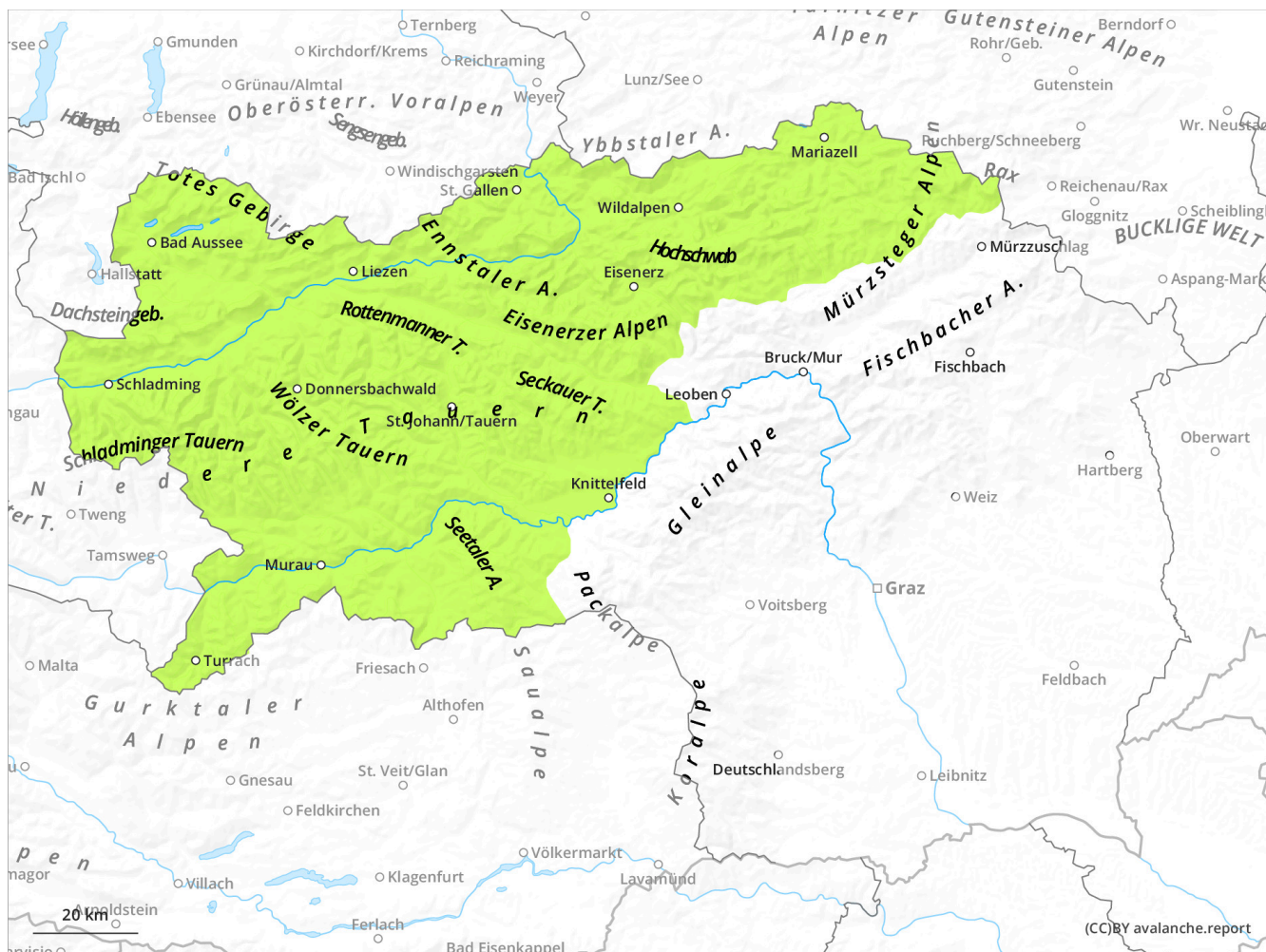
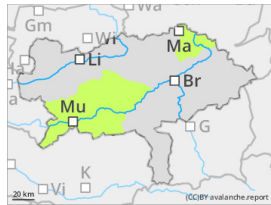


## Only little snow, persistent weak layers in shady high-altitude areas



## Danger Level 1 - Low



**Tendency: Constant avalanche danger** →  
on Thursday 23 January 2025



Persistent  
weak layer



### Avalanche danger low, very little snow.

The avalanche danger is low. Only in some places in high altitudes an extremely steep and shady gullies and bowls small slab avalanches are possible. In case of triggered avalanches risk of injuries is more likely than risk of being buried.

### Snowpack

The snow cover is unusual thin for this season and southern slopes as well as exposed areas are predominately bare or icy. An area-wide, cohesive snow base is only existing in blown-in gullies and bowls and shady high-altitude slopes. That snow cover is characterized by equilibrium (isothermal) metamorphosis. It is succession of soft layers on the surfaces, partially powder snow, and faceted snow crystals with melt-freeze crusts.

### Weather

Tuesday night stays clear in the Styrian mountains and the day will be sunny. Only weak to moderate south winds and Temperatures at are between -2 in the beginning of the day to +2 degrees in 2.000 m.

### Tendency

The avalanche danger stays small.