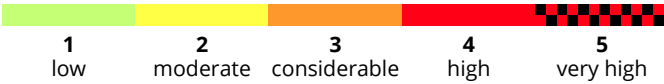
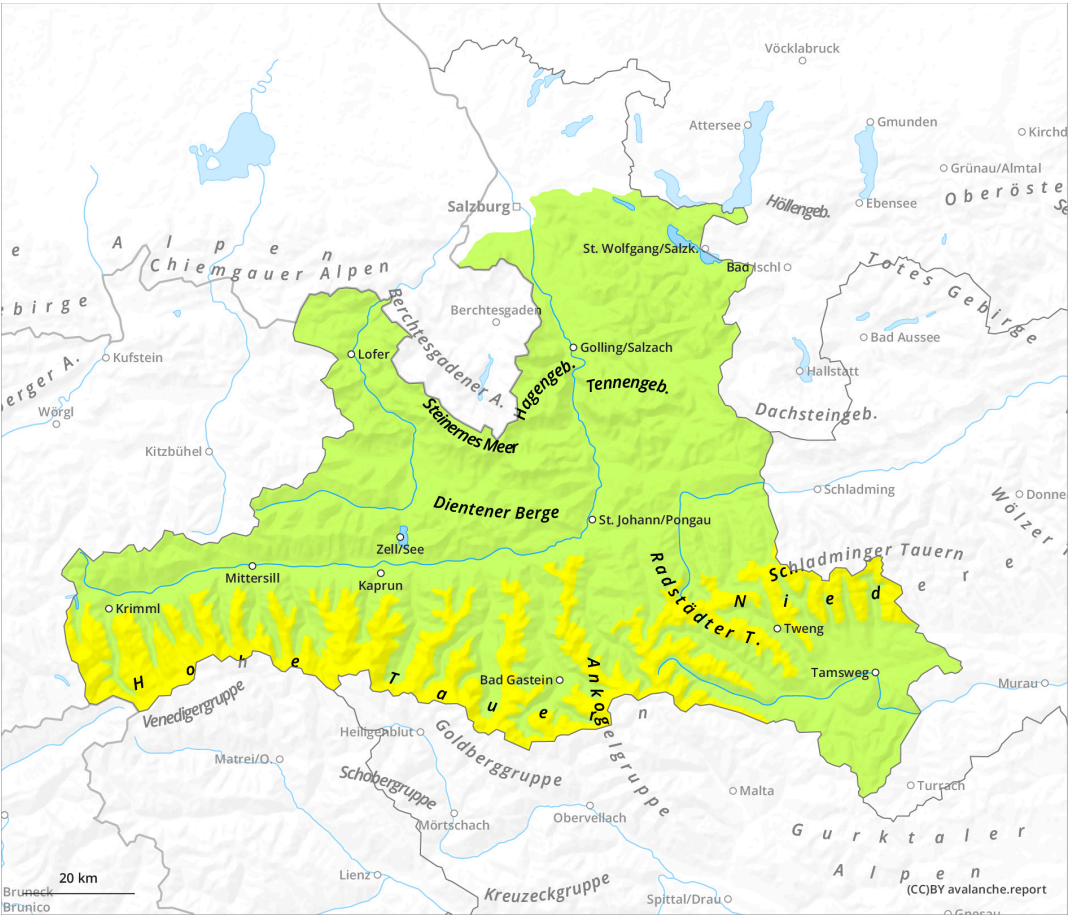
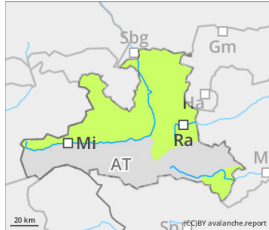


Updated 18 Feb 2025, 17:02:00
Valid from 18 Feb 2025, 17:00:00 until 19 Feb 2025, 17:00:00
translated with DeepL

Fresh drifts. Avalanches can be triggered on old snow in isolated cases.



Danger Level 1 - Low



Tendency: Constant avalanche danger
on Thursday 20 February 2025



Favorable situation

Avalanche danger is low. Triggering a small slab is possible in only few places, most endangered are shady slopes in very steep terrain above 2000m. In isolated cases a small glide-snow avalanche is possible. Isolated small naturally triggered glide-snow avalanches possible.

Snowpack

Atop a melt-freeze crust (or else, bare ground) loosely-packed snow lies deposited. Surface hoar has often been blanketed. Due to winds from varying directions small snowdrifts are being generated from the loose fresh snow or faceted crystals near the near-surface crusts, these are prone to triggering. The weak layers also occur on sunny slopes. The very below-average old snow fundament consists of several crusts with faceted crystals beneath them, but all-in-all is often quite compact and only seldom tends towards fracture propagation. On sunny slopes the snow is sticky or as a thin melt-freeze crust.

Weather

On Wednesday outstanding backcountry touring weather with lots of sunshine and good visibility into far distances. Only light winds from varying directions, only in high-alpine terrain of the Tauern will there be brisk NW winds in afternoon (50-70 km/hr). At 2000m: -5 in Lungau and -2 degrees in the Northern Alps; at 3000m: -8 degrees.

Tendency

No significant change in danger levels anticipated