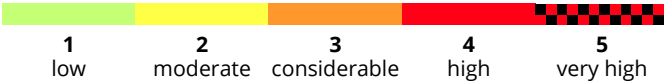
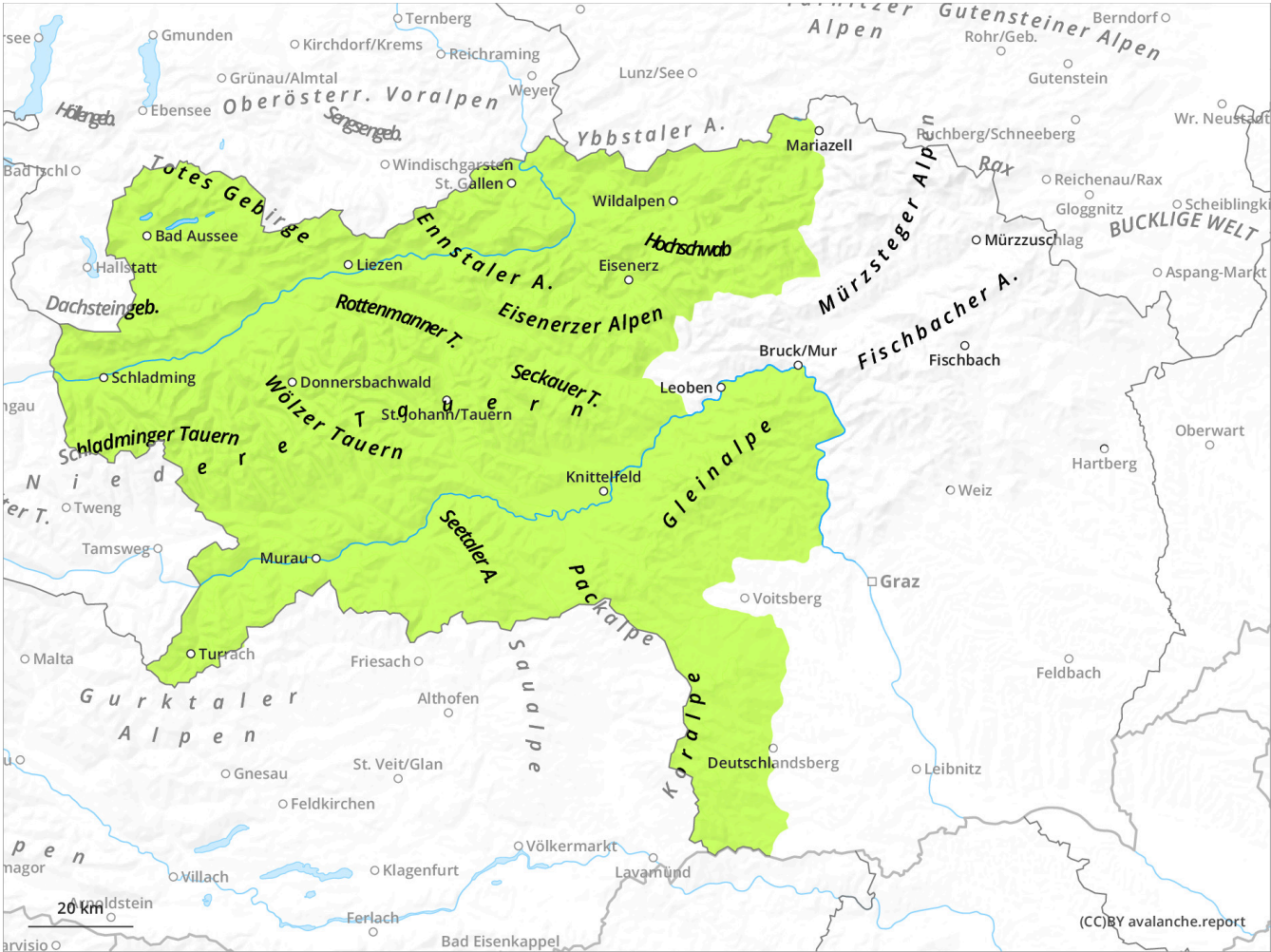
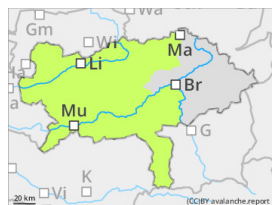


Low avalanche danger!



Danger Level 1 - Low



Tendency: Increasing avalanche danger
on Thursday 13 March 2025



Wet snow



Wind slab



2200m

Wet loose-snow avalanches.

Danger assessment

Avalanche danger is in general low. In high altitudes danger spots in form of snowdrift deposits which are prone to triggering are found. There - in shady areas or adjacent to ridgelines small slab avalanches can be triggered. In the southern mountains small wet loose-snow avalanches due to rain are possible.

Snowpack

The snow base, which has a very low amount considering the season is predominantly stable. Depending on the exposition the snow cover is moist or wet. Especially on sunny slopes only little amounts of snow are found even in high altitudes. In shady slopes above 2.200 m loose snow is found in some places. Between Turrach and Koralpe some new snow (above 1.800 m) is covering a partially hard old snow cover.

Weather

Some showers are passing through coming from southwest, partially it will be sunny. Snowline is 1.800 m. Southwesterly winds with peaks between 50 and 80 km/h. Temperatures at noon will be 0 degrees in 2.000 m. Highest amounts of precipitation are between Turrach and Koralpe.

Tendency

The avalanche danger can increase slightly on Thursday.