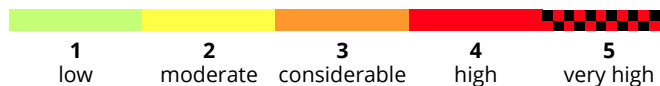
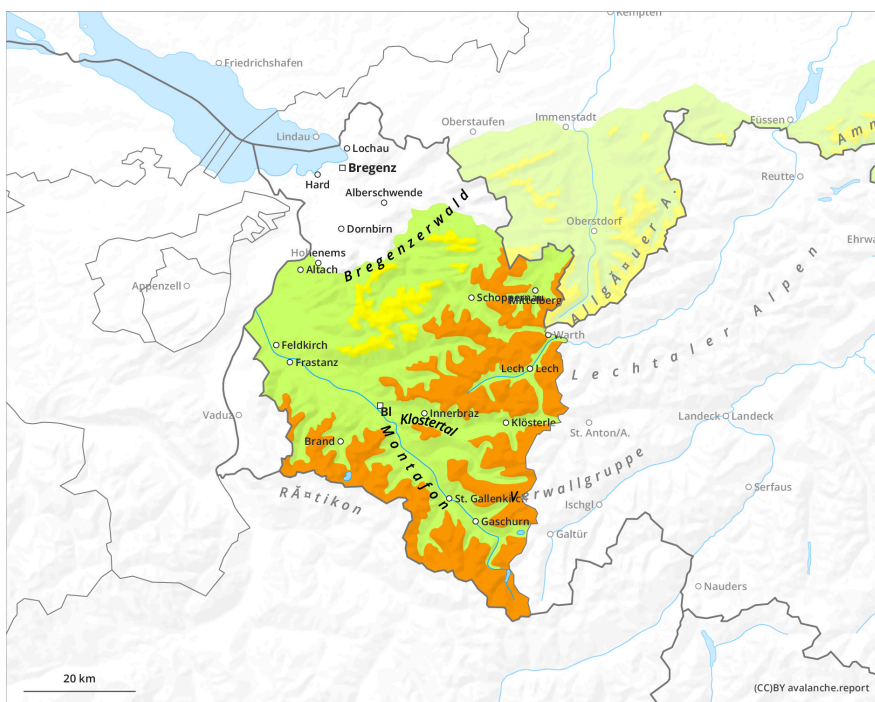
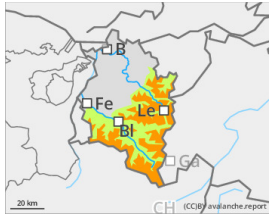


Fresh snowfall + strong winds = often easily triggered snowdrifts



Danger Level 3 - Considerable



Tendency: Constant avalanche danger
on Sunday 4 January 2026



Wind slab



Snowdrift accumulations easy to trigger in places

As a result of fresh fallen snow and strong-velocity westerly winds, snowdrift accumulations which are prone to triggering are being generated. They are easy to trigger in places and can grow to medium sized avalanches. Danger zones are located primarily on shady W-N-E facing slopes above 2000m, particularly in ridgeline terrain, in wind-loaded gullies and bowls. Apart from the risks of being buried in snow masses, the dangers of being swept along and forced to take a fall also require caution.

Snowpack

Strong-velocity westerly winds will transport 10-25cm of fresh fallen snow. The fresh snowdrift accumulations will be deposited mostly on shady slopes atop an unfavorable old snowpack surface, they are prone to triggering. Beneath the frequently thin melt-freeze crust, the old snow has metamorphosed expansively and is weak. Snow depths are below average at all altitudes. Only limited information is currently available to the Avalanche Warning Services.

Weather

The latest snow showers will taper off and cloud cover gradually disperse. At least intermittently over the course of the day, the sun will appear. It will remain bitter cold, winds sharpening the subjective feeling of cold even further. At 2000m: -12 degrees; at 3000m: -18 degrees. Brisk to strong-velocity westerly winds at high altitudes.

Tendency

Brittle, delicate snowdrifts will remain trigger sensitive.