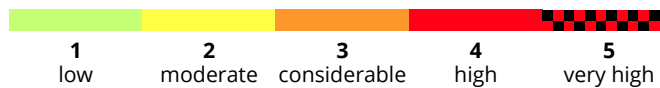
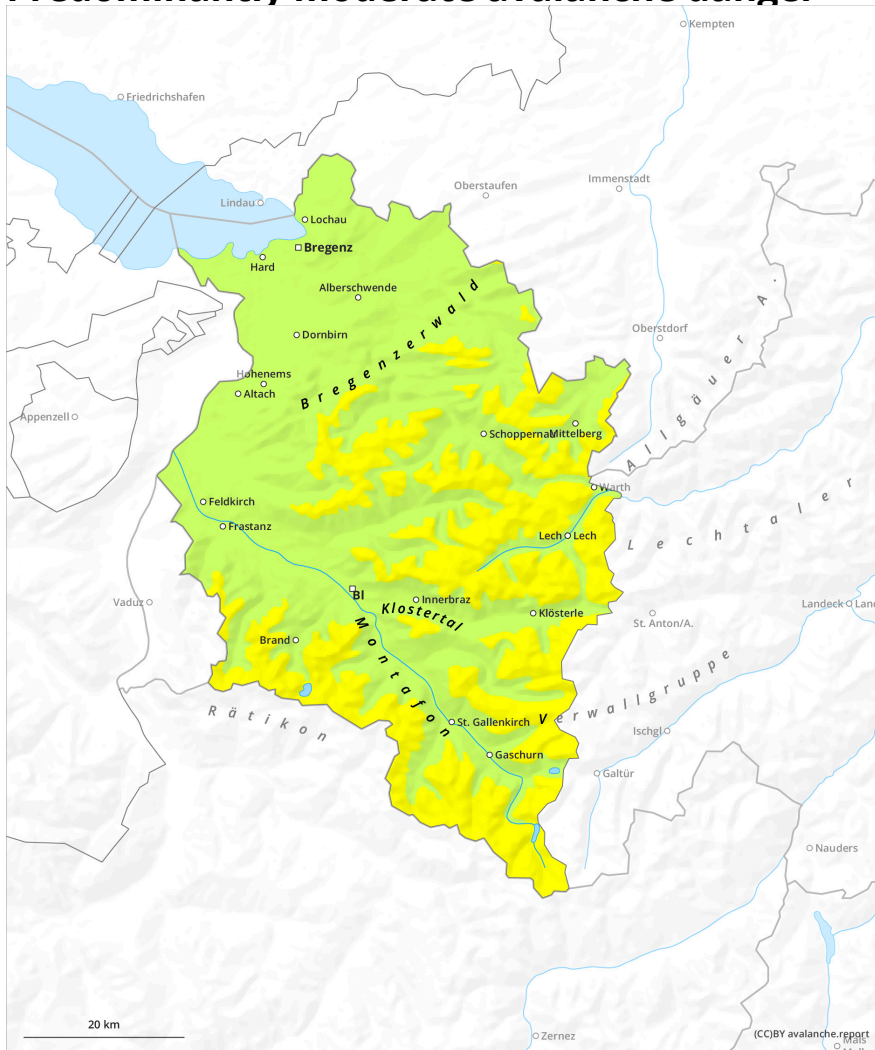
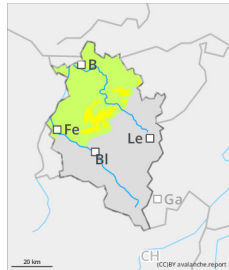


Predominantly moderate avalanche danger



Danger Level 2 - Moderate



Tendency: Constant avalanche danger
on Friday 28 March 2025 →



Wet snow



Not much snow, low avalanche danger

Avalanche danger is low. In isolated cases, small loose-snow avalanches can trigger naturally in extremely steep terrain. Apart from the danger of being buried in snow masses, the risks of being swept along and forced to take a fall require adequate caution. Small glide-snow avalanches are possible on steep slopes on smooth ground where there is sufficient snow.

Snowpack

Showers will bring only minor new snowfall which will bond well with the moist old snowpack. On shady steep high-altitude slopes and in ridgeline terrain, small-area snowdrift accumulations require caution. A cohesive area-wide snowpack is generally evident only on shady slopes above 1400m. Up to high altitudes the snowpack is most and weakened by rainfall. Gliding movement over smooth ground are possible. South-facing slopes are generally bare of snow.

Weather

In high-alpine regions, the sun will rapidly prevail against the early fogbanks and residual clouds. Elsewhere clouds will disperse more slowly, clouds and fog esp. persistent along the mountainside flanks, even into afternoon. At 2000m: -3 to 0 degrees. Brisk to strong E/NE winds.

Tendency

Friday will be very sunny. Avalanche danger levels expected to remain unchanged.